



**GLENDALE
ELEMENTARY
SCHOOL DISTRICT**



APPLIED ECONOMICS

Boundary Proposal

Governing Board Presentation: December 10, 2020



The purpose of this Demographic and Enrollment Analysis for the Glendale Elementary School District is to:

- Identify current and historic demographic, development and enrollment trends.
- Address inefficiencies and trends in declining enrollment for the last decade.
- Project future enrollment trends to ensure financial solvency.



Phase III: 2020-2021

- Analysis of boundary changes to optimize program services for students in special education - Completed
- Analysis of sale and/or lease of land - Completed
- Formalized request to School Facilities Board to replace schools - Completed
- Analysis of boundary changes to optimize program services for general education students
- Reanalysis of staffing models



Proposed Next Steps: 2020-2021

August- December 2020

- Analysis of Repurpose and/or Closure of Schools determined by:
 - Life of Facility
 - Program Changes
 - Statutory Requirements
 - Declining Enrollment
 - Population Density



Goals

- GESD will ensure financial solvency by providing the community a multi-year process of reorganizing boundaries and repurposing schools by June 2021.
- GESD will provide a plan for academic alignment to address the achievement gap by providing a multi-year process of the implementation of rigorous teaching and learning systems by June 2021.
- GESD will build a process for ensuring and implementing a System of Care for the students, community, and staff throughout the district by June 2021.

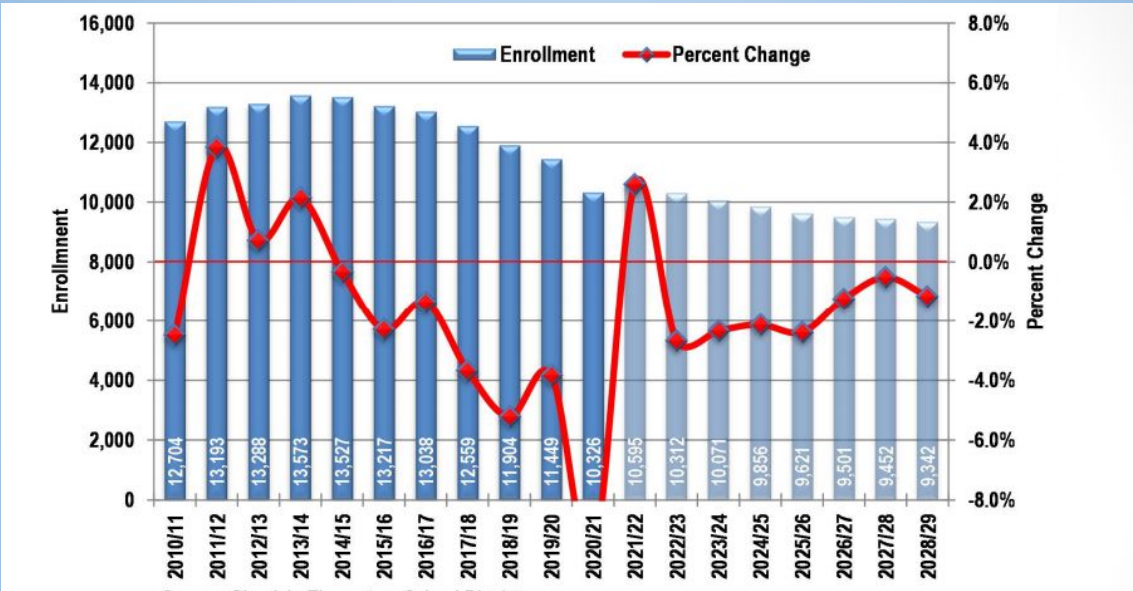


Proposal Key Points:

- Utilized 19-20 grid code counts for the data
- Boundaries do not cross Grand Ave.
- Grid code counts are based on addresses (attendance area)
 - This means internal open enrollment is not a factor in the numbers
- Counts do not include out of district open enrollment numbers
- Maximize efficiencies such as facility utilization
- Move to all K-8 sites



Mid Scenario Enrollment

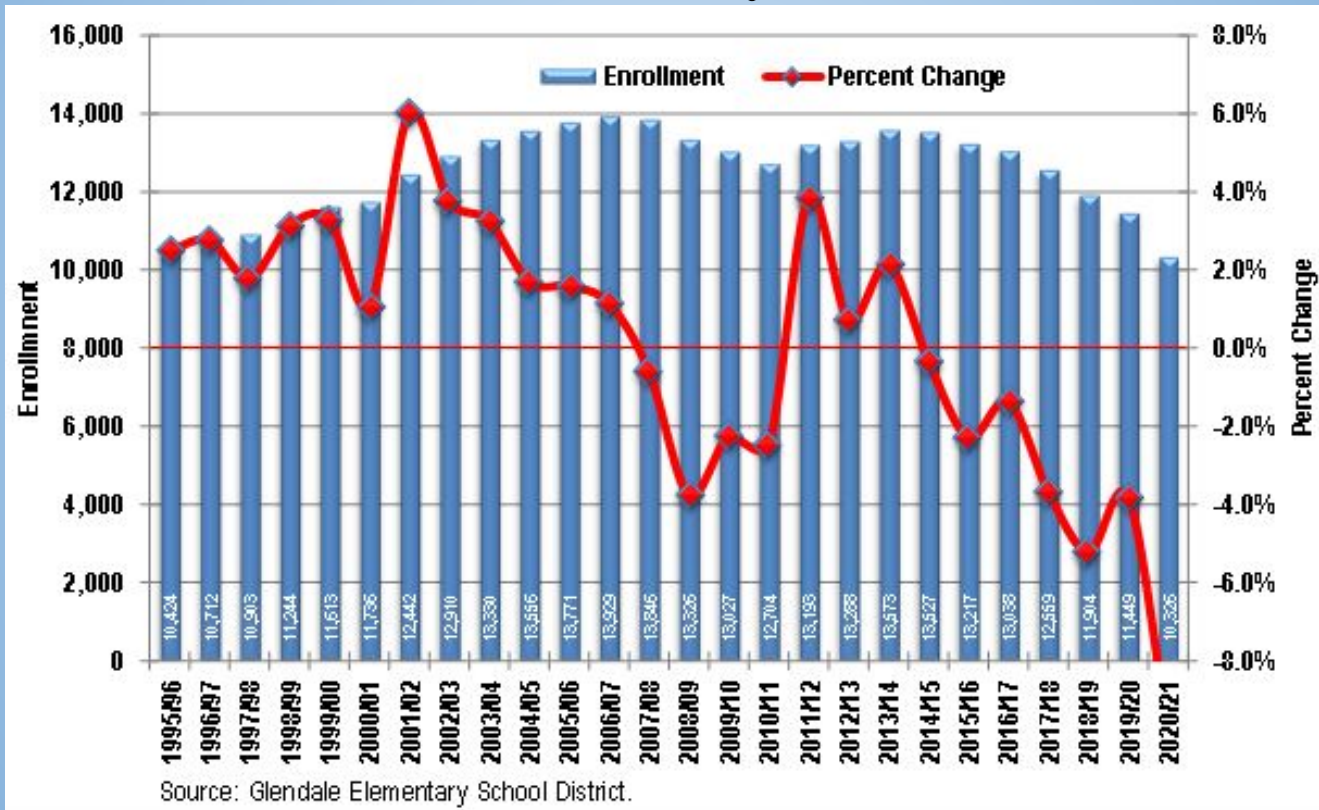


Source: Glendale Elementary School District.

Enrollment fell by over 2,100 students between 2013/14 and 2019/20, and average of over 350 students (2.8 percent) per year, mostly due to competition from charter schools.

This year's loss of about 1,100 students was about 800 more than projected due to the impacts of COVID, some portion of which may return next year.

History





1995 -1996 School Sites

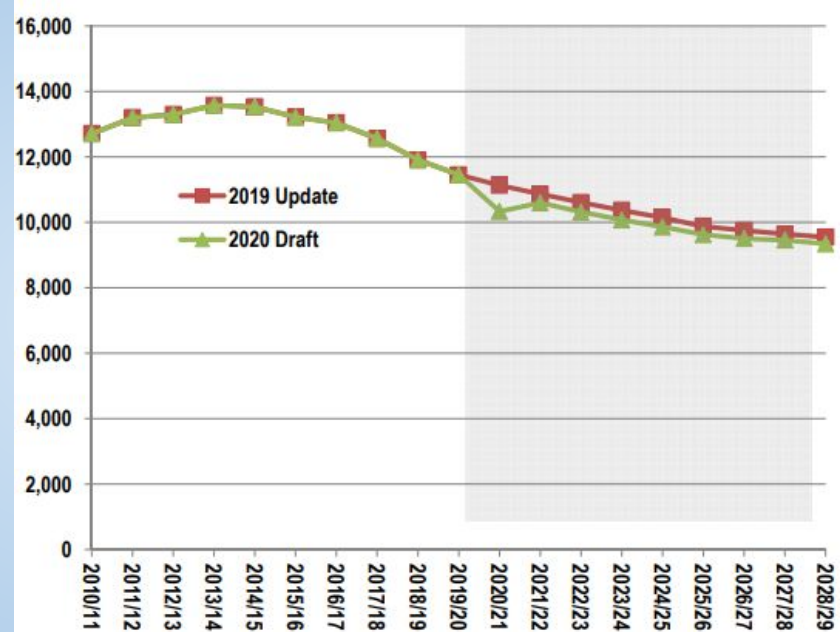
1. Isaac E. Imes built in 1942
2. Harold W. Smith built in 1952
3. Melvin E. Sine built in 1957
4. William C. Jack built in 1958
5. Don Mensendick built in 1966
6. Glenn F. Burton built in 1972
7. Glendale American built in 1974
8. Horizon built in 1976
9. BiCentennial North built 1976
10. Landmark built in 1987
11. Challenger built in 1987
12. BiCentennial South built in 1987
13. Discovery built in 1992

Enrollment Scenario Recap

Fall	K-8 Enrollment		Change	
	2019 Update	2020 Draft	2019 Update	2020 Draft
2010/11	12,704	12,704		
2011/12	13,193	13,193	489	489
2012/13	13,288	13,288	95	95
2013/14	13,573	13,573	285	285
2014/15	13,527	13,527	-46	-46
2015/16	13,217	13,217	-310	-310
2016/17	13,038	13,038	-179	-179
2017/18	12,559	12,559	-479	-479
2018/19	11,904	11,904	-655	-655
2019/20	11,449	11,449	-455	-455
2020/21	11,127	10,326	-322	-1,123
2021/22	10,857	10,595	-270	269
2022/23	10,603	10,312	-254	-283
2023/24	10,367	10,071	-236	-241
2024/25	10,143	9,856	-224	-215
2025/26	9,877	9,621	-266	-235
2026/27	9,749	9,501	-128	-120
2027/28	9,638	9,452	-111	-49
2028/29	9,542	9,342	-96	-110
2020/21-2028/29			-1,907	-2,107

Source: Applied Economics, 2020.

Bolding indicates actuals.



While the impacts of COVID are likely to diminish next year, the long term trajectory of development is still down.

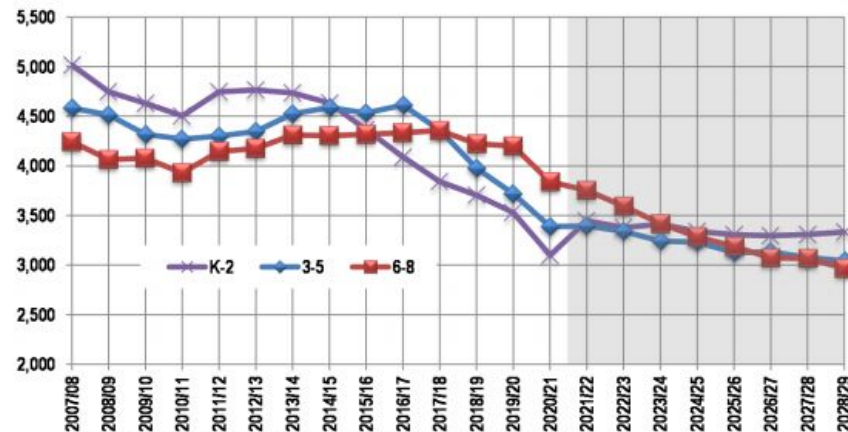


Enrollment by Grade

Year	Enrollment by Grade										K-8 Total	Percent Change	Total Enrollment
	PS	K	1	2	3	4	5	6	7	8			
2010/11	273	1,551	1,512	1,441	1,435	1,411	1,424	1,343	1,315	1,272	12,704	-2.5%	12,977
2011/12	277	1,616	1,599	1,532	1,460	1,445	1,395	1,424	1,398	1,324	13,193	3.8%	13,470
2012/13	350	1,574	1,586	1,606	1,521	1,406	1,420	1,402	1,412	1,361	13,288	0.7%	13,638
2013/14	312	1,589	1,564	1,584	1,589	1,501	1,434	1,447	1,417	1,448	13,573	2.1%	13,885
2014/15	305	1,469	1,600	1,564	1,571	1,554	1,464	1,466	1,446	1,393	13,527	-0.3%	13,832
2015/16	382	1,315	1,479	1,571	1,548	1,503	1,483	1,451	1,448	1,419	13,217	-2.3%	13,599
2016/17	356	1,304	1,303	1,484	1,605	1,505	1,503	1,468	1,450	1,416	13,038	-1.4%	13,394
2017/18	458	1,243	1,328	1,270	1,418	1,511	1,432	1,478	1,442	1,437	12,559	-3.7%	13,017
2018/19	381	1,192	1,222	1,291	1,229	1,355	1,391	1,425	1,395	1,404	11,904	-5.2%	12,285
2019/20	369	1,173	1,194	1,164	1,254	1,151	1,313	1,357	1,434	1,409	11,449	-3.8%	11,818
2020/21	188	910	1,100	1,090	1,122	1,159	1,106	1,221	1,298	1,320	10,326	-9.8%	10,514
2021/22	343	1,161	1,094	1,192	1,109	1,112	1,173	1,135	1,267	1,352	10,595	2.6%	10,938
2022/23	334	1,129	1,170	1,079	1,178	1,068	1,093	1,169	1,144	1,282	10,312	-2.7%	10,646
2023/24	326	1,128	1,134	1,151	1,063	1,132	1,047	1,086	1,176	1,154	10,071	-2.3%	10,397
2024/25	319	1,115	1,122	1,104	1,122	1,010	1,098	1,030	1,081	1,174	9,856	-2.1%	10,175
2025/26	311	1,103	1,110	1,094	1,078	1,068	981	1,081	1,026	1,080	9,621	-2.4%	9,932
2026/27	307	1,114	1,099	1,083	1,069	1,027	1,038	967	1,078	1,026	9,501	-1.2%	9,808
2027/28	305	1,125	1,110	1,073	1,059	1,019	999	1,023	965	1,079	9,452	-0.5%	9,757
2028/29	301	1,134	1,119	1,081	1,047	1,007	989	983	1,018	964	9,342	-1.2%	9,643

Source: Applied Economics, 2020.

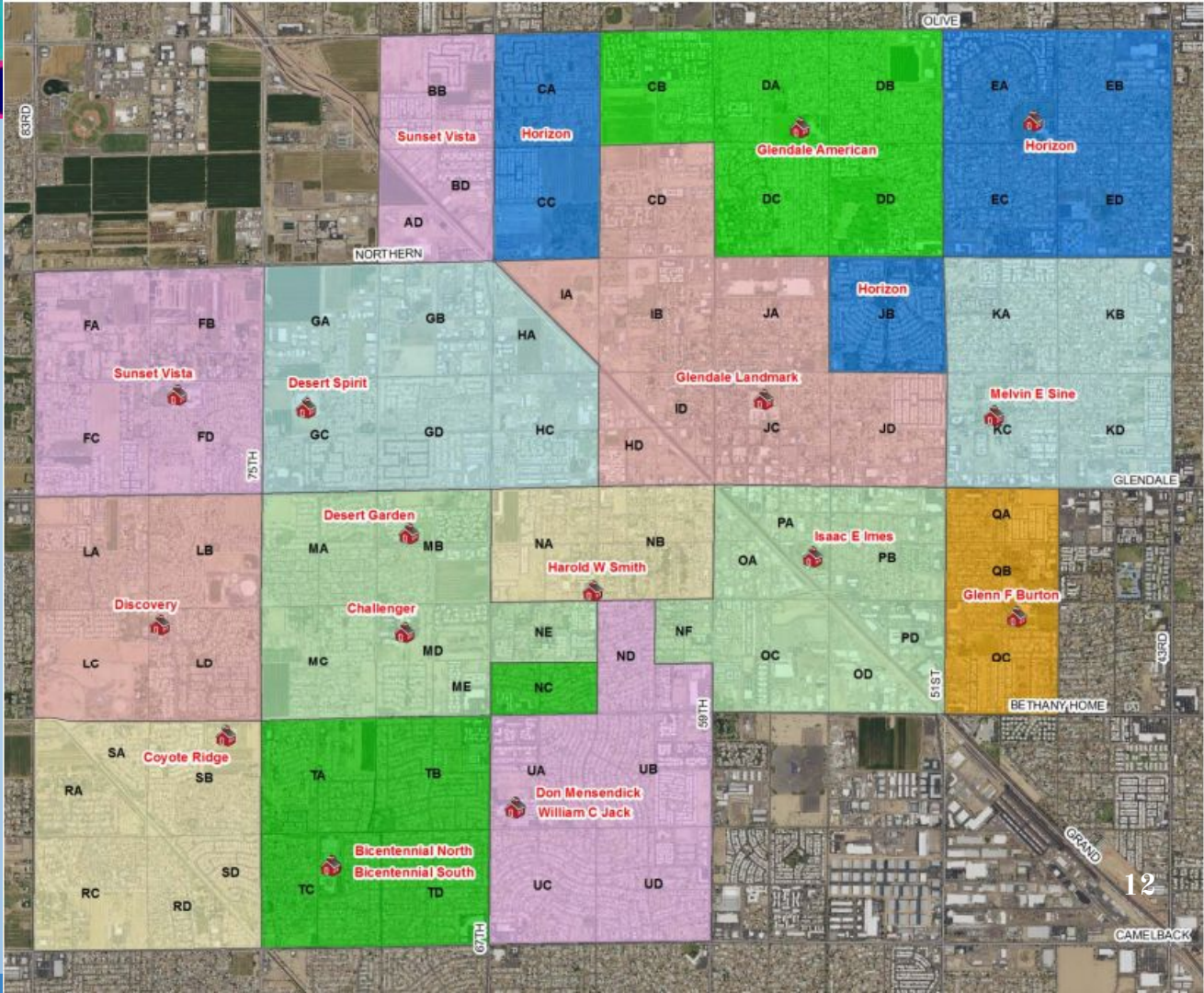
Bolding Indicates Actuals.



Source: Glendale Elementary School District; Applied Economics, 2020.

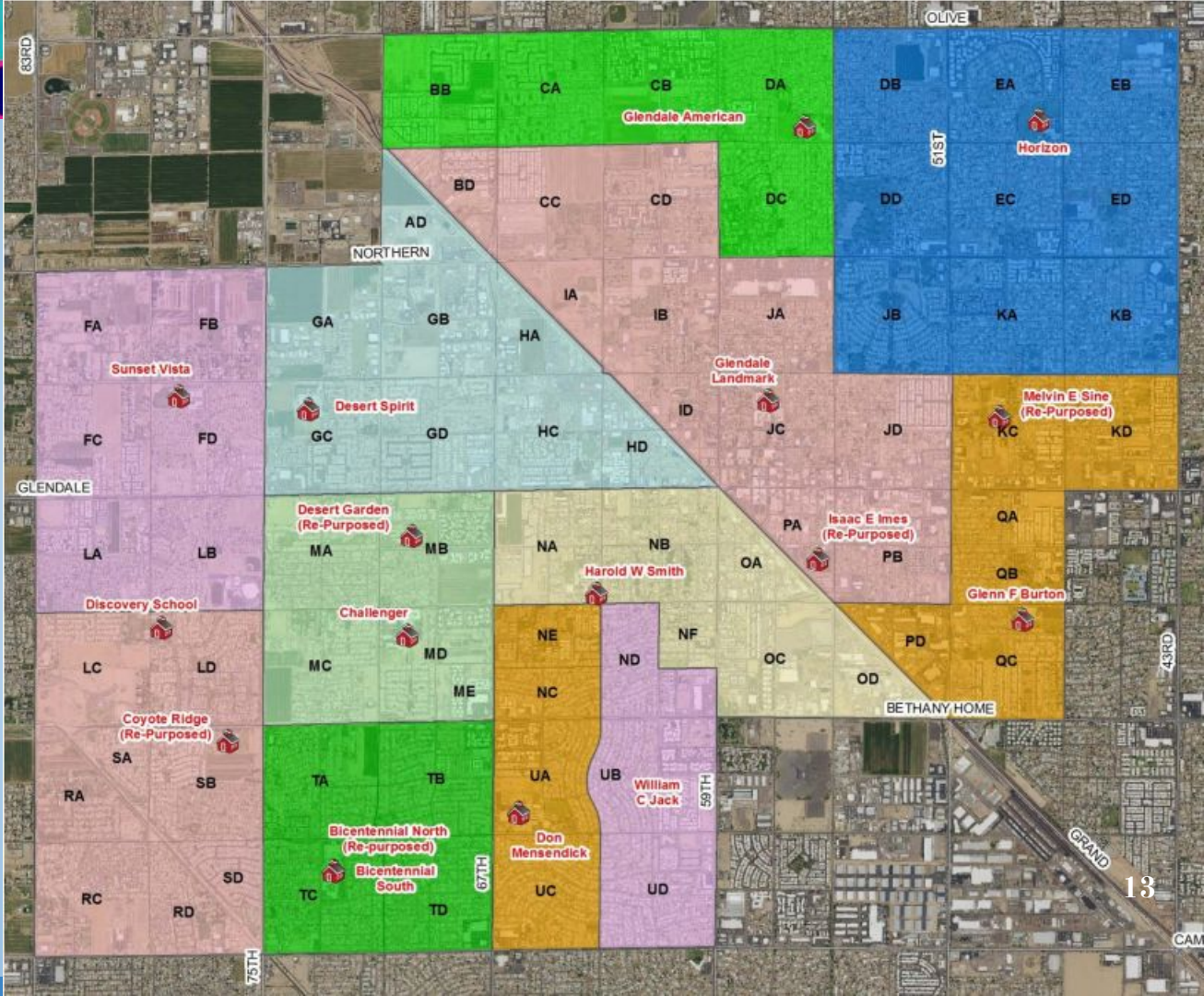


Current Attendance Areas





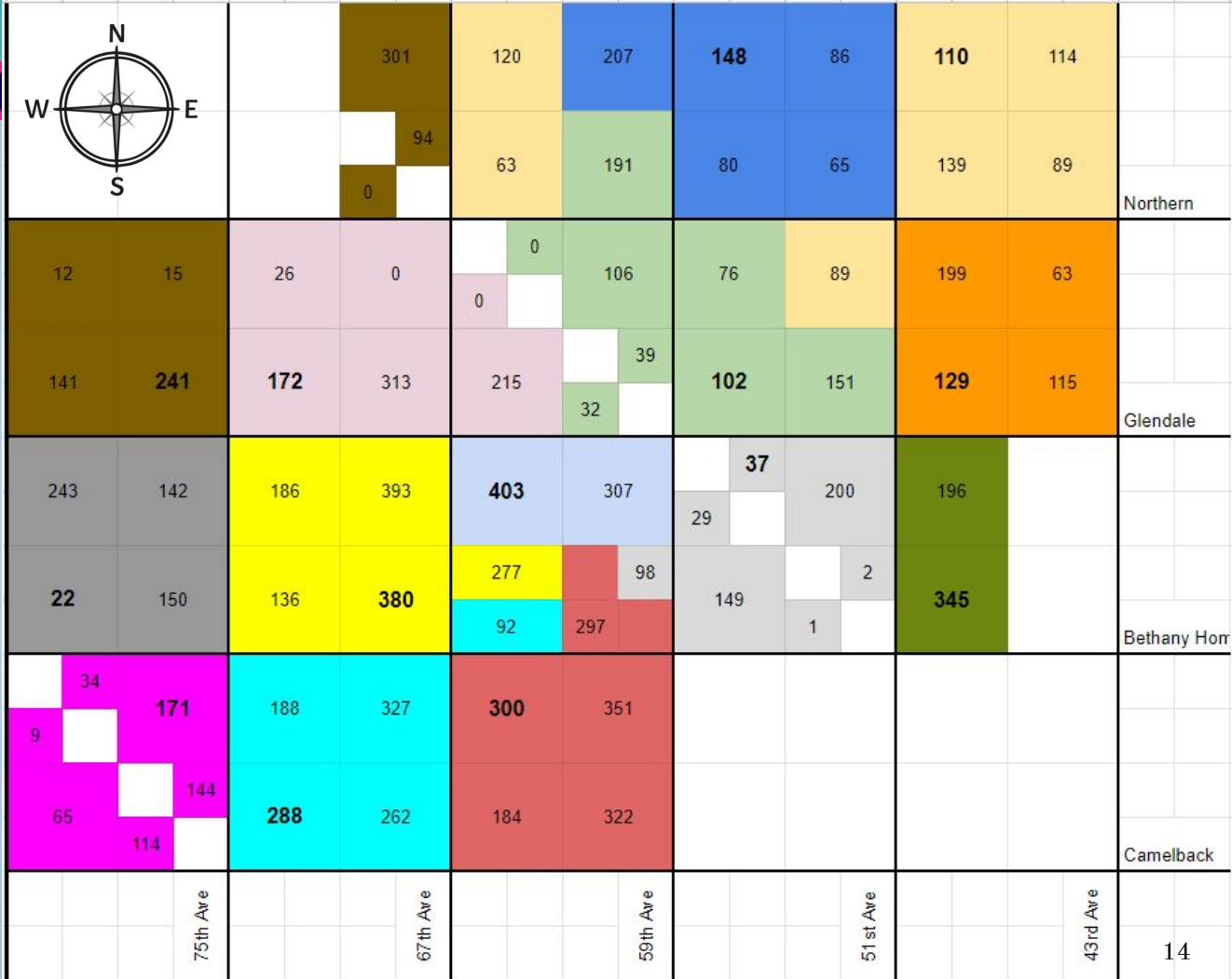
Recommended Attendance Areas

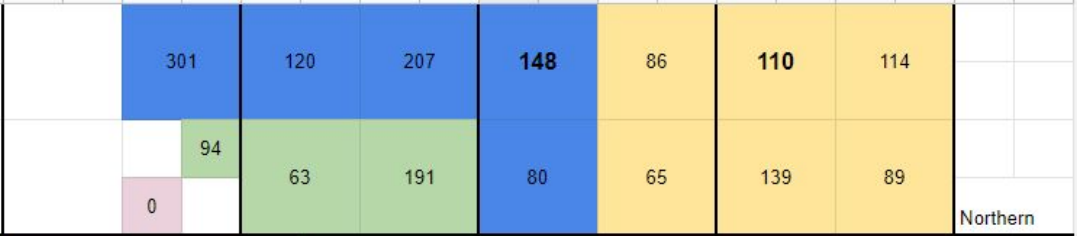
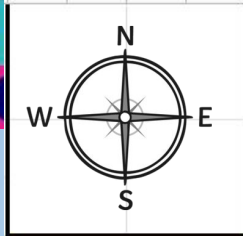




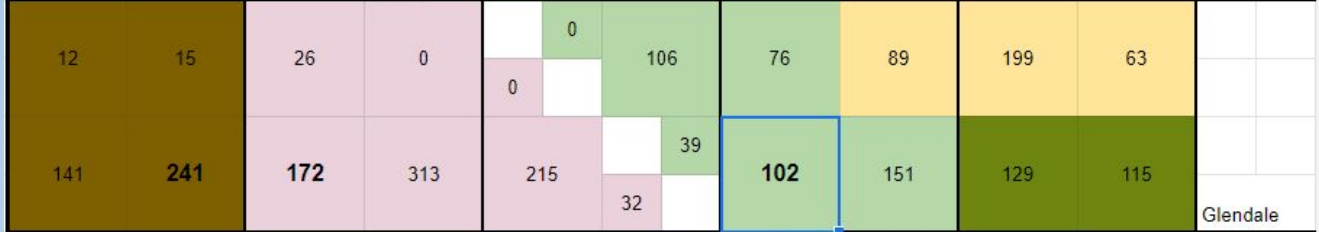
Current Grid Counts

School	Attendance Area Count
101 - Glendale Landmark	697
102 - Isaac E. Imes	516
103 - Harold W. Smith	710
104 - Melvin E. Sine	506
105 - William C. Jack	1454
106 - Don Mensendick	
107 - Glenn F. Burton	541
108 - Glendale American	586
109 - Bicentennial North	1157
112 - Bicentennial South	
110 - Horizon	724
111 - Challenger	1372
114 - Desert Garden	
113 - Discovery	557
115 - Coyote Ridge	537
116 - Desert Spirit	726
117 - Sunset Vista	804

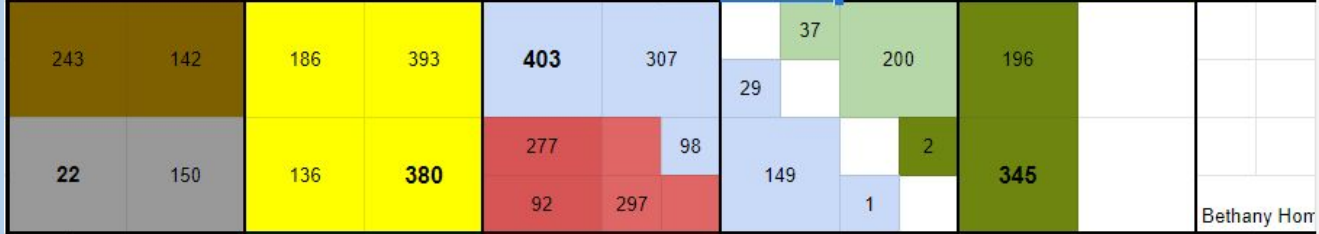




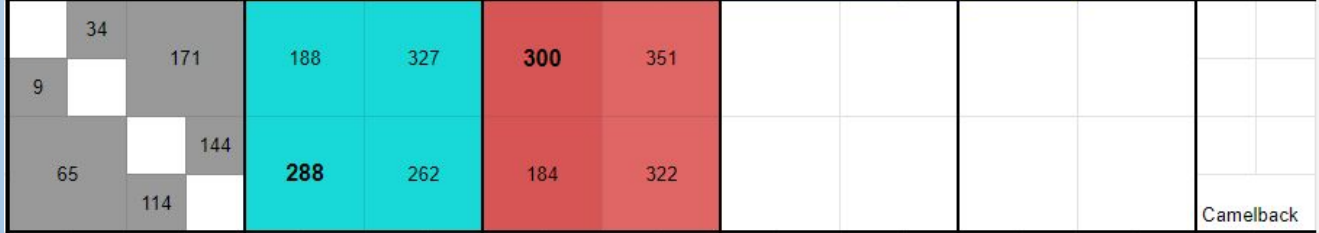
Northern



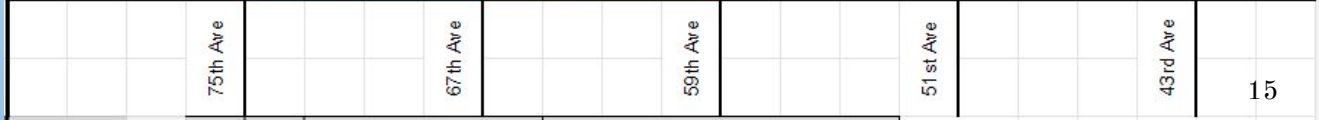
Glendale



Bethany Hor



Camelback



Proposed Grid Counts

School	Attendance Area Count
101 - Glendale Landmark	1059
102 - Isaac E. Imes	0
103 - Harold W. Smith	987
104 - Melvin E. Sine	0
105 - William C. Jack	970
106 - Don Mensendick	853
107 - Glenn F. Burton	787
108 - Glendale American	856
109 - Bicentennial North	0
110 - Horizon	954
111 - Challenger	1095
112 - Bicentennial South	1065
113 - Discovery	709
114 - Desert Garden	0
115 - Coyote Ridge	0
116 - Desert Spirit	758
117 - Sunset Vista	794

Projected Attendance Area based on Proposal

<i>Assigned School</i>	Capacity w/o Portables	19-20 Attendance Area	20-21 Attendance Area Projection*	21-22 Attendance Area Projection*	22-23 Attendance Area Projection*	23-24 Attendance Area Projection*	28-29 Attendance Area Projection*
101 - Glendale Landmark	1260	1059	986	951	927	909	815
103 - Harold W. Smith	1380	987	1061	1023	1003	971	864
105 - William C. Jack	1140	970	950	923	905	894	813
106 - Don Mensendick	1290	853	830	834	803	777	705
107 - Glenn F. Burton	1020	787	713	695	671	669	612
108 - Glendale American	1080	856	808	786	761	747	640
110 - Horizon	1170	954	885	922	913	899	895
111 - Challenger	1410	1095	1086	1037	1028	992	911
112 - Bicentennial South	870	1065	1043	1040	1014	1023	1002
113 - Discovery	900	709	695	680	682	656	625
116 - Desert Spirit	1230	758	743	706	660	644	613
117 - Sunset Vista	1230	794	795	753	741	705	630

From: Nov. 12, 2020 Applied Economics

“Current” Facility Utilization

As a percent of GESD Capacity without Portables

Attendance Area	Actual						Projected					
	2014/15	2015/16	2016/17	2017/18	2018/19	2019/20	2020/21	2021/22	2022/23	2023/24	2024/25	2028/29
American	60%	64%	61%	60%	60%	54%	52%	57%	55%	52%	52%	53%
Bicentennial South	81%	67%	66%	59%	55%	55%	55%	57%	56%	56%	55%	58%
Bicentennial North	84%	79%	80%	81%	71%	66%	64%	62%	60%	60%	60%	57%
Burton	72%	70%	65%	64%	61%	53%	49%	48%	47%	47%	46%	42%
Coyote Ridge	46%	41%	43%	40%	40%	39%	39%	38%	39%	38%	38%	37%
Desert Garden	72%	75%	72%	68%	64%	58%	57%	57%	57%	55%	54%	53%
Challenger	55%	54%	55%	58%	54%	56%	56%	53%	52%	50%	48%	43%
Desert Spirit	69%	69%	72%	71%	65%	59%	58%	55%	51%	50%	49%	48%
Discovery	76%	75%	72%	70%	63%	62%	60%	55%	54%	50%	49%	43%
Horizon	67%	64%	65%	64%	61%	62%	55%	52%	51%	51%	50%	46%
Imes	65%	60%	62%	63%	69%	61%	59%	57%	57%	55%	53%	49%
Landmark	58%	58%	53%	57%	51%	53%	49%	47%	46%	45%	43%	40%
Jack	63%	66%	66%	61%	54%	55%	55%	53%	53%	52%	51%	50%
Mensendick	74%	78%	73%	73%	67%	64%	62%	61%	59%	58%	57%	51%
Sine	50%	53%	57%	50%	47%	41%	36%	35%	33%	33%	33%	31%
Smith	65%	64%	63%	59%	58%	54%	60%	57%	56%	54%	53%	48%
Sunset Vista	66%	69%	63%	63%	63%	65%	67%	66%	66%	65%	61%	57%
TOTAL	70%	68%	67%	65%	61%	59%	57%	56%	55%	53%	52%	49%

Sources: Glendale Elementary School District; Applied Economics, 2019.

Proposed Facility Utilization

As a percent of GESD Capacity without Portables

<i>Assigned School</i>	19-20	20-21	21-22	22-23	23-24	28-29
101 - Glendale Landmark	84.05%	78.23%	75.45%	73.54%	72.12%	64.68%
103 - Harold W. Smith	71.52%	76.91%	74.10%	72.67%	70.36%	62.59%
105 - William C. Jack	85.09%	83.37%	80.98%	79.41%	78.43%	71.36%
106 - Don Mensendick	66.12%	64.32%	64.65%	62.27%	60.24%	54.67%
107 - Glenn F. Burton	77.16%	69.88%	68.14%	65.82%	65.62%	59.96%
108 - Glendale American	79.26%	74.83%	72.74%	70.50%	69.13%	59.26%
110 - Horizon	81.54%	75.60%	78.81%	77.99%	76.85%	76.48%
111 - Challenger	77.66%	76.99%	73.56%	72.94%	70.37%	64.60%
112 - Bicentennial South	122.41%	119.91%	119.53%	116.61%	117.63%	115.23%
113 - Discovery	78.78%	77.24%	75.52%	75.80%	72.94%	69.49%
116 - Desert Spirit	61.63%	60.37%	57.40%	53.62%	52.36%	49.83%
117 - Sunset Vista	64.55%	64.65%	61.19%	60.26%	57.35%	51.25%
TOTAL	* 79.15%	76.86%	75.17%	73.45%	71.95%	66.62%

**Total Percentages fluctuate by about 2% (compared to 100% Utilization) due to Bicentennial South's Over Capacity (870).*

Proposed Facility Utilization

As a percent of GESD Capacity without Portables

Assigned School	19-20	20-21	21-22	22-23	23-24	28-29
101 - Glendale Landmark	84.05%	78.23%	75.45%	73.54%	72.12%	64.68%
103 - Harold W. Smith	71.52%	76.91%	74.10%	72.67%	70.36%	62.59%
105 - William C. Jack	85.09%	83.37%	80.98%	79.41%	78.43%	71.36%
106 - Don Mensendick	66.12%	64.32%	64.65%	62.27%	60.24%	54.67%
107 - Glenn F. Burton	77.16%	69.88%	68.14%	65.82%	65.62%	59.96%
108 - Glendale American	79.26%	74.83%	72.74%	70.50%	69.13%	59.26%
110 - Horizon	81.54%	75.60%	78.81%	77.99%	76.85%	76.48%
111 - Challenger	77.66%	76.99%	73.56%	72.94%	70.37%	64.60%
112 - Bicentennial South*	104.41%	102.27%	101.95%	99.46%	100.33%	98.28%
113 - Discovery	78.78%	77.24%	75.52%	75.80%	72.94%	69.49%
116 - Desert Spirit	61.63%	60.37%	57.40%	53.62%	52.36%	49.83%
117 - Sunset Vista	64.55%	64.65%	61.19%	60.26%	57.35%	51.25%
TOTAL	77.65%	75.39%	73.71%	72.02%	70.51%	65.21%

*Bicentennial South's Capacity is noted at Bicentennial North's current Capacity (1020)

GEO Student counts by Attendance Area

Current Boundaries

Assigned School	Students
99	112
99999	1
101 - Glendale Landmark	125
102 - Isaac E. Imes	58
103 - Harold W. Smith	108
104 - Melvin E. Sine	45
105 - William C. Jack	88
106 - Don Mensendick	122
107 - Glenn F. Burton	83
108 - Glendale American	91
109 - Bicentennial North	174
110 - Horizon	129
111 - Challenger	219
112 - Bicentennial South	125
113 - Discovery	94
114 - Desert Garden	103
115 - Coyote Ridge	102
116 - Desert Spirit	119
117 - Sunset Vista	148
Grand Total	2046

Proposed Boundaries

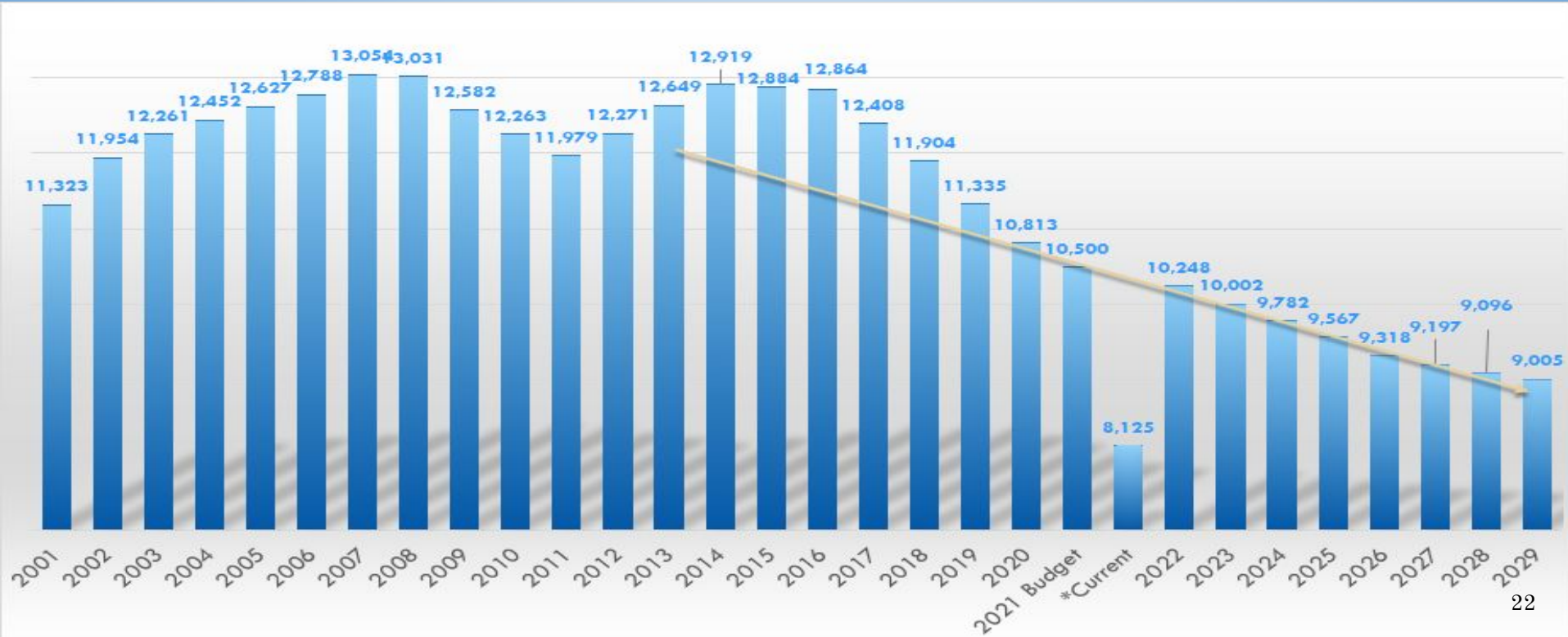
Assigned School	Students
99	112
99999	1
101 - Glendale Landmark	180
103 - Harold W. Smith	136
105 - William C. Jack	160
106 - Don Mensendick	121
107 - Glenn F. Burton	109
108 - Glendale American	129
110 - Horizon	145
111 - Challenger	268
112 - Bicentennial South	282
113 - Discovery	127
116 - Desert Spirit	126
117 - Sunset Vista	150
Grand Total	2046

Based on Synergy data from 2020-12-08

Proposed Grid Code Assigned School

Proposed Assigned School	Proposed Assigned Grid Codes												
101 - Glendale Landmark	BD	CC	CD	IA	IB	ID	JA	JC	JD	PA	PB		
102 - Isaac E. Imes													
103 - Harold W. Smith	NA	NB	NF	OA	OC	OD							
104 - Melvin E. Sine													
105 - William C. Jack	ND	UB	UD										
106 - Don Mensendick	NC	NE	UA	UC									
107 - Glenn F. Burton	KC	KD	PD	QA	QC								
108 - Glendale American	BB	CA	CB	DA	DC								
109 - Bicentennial North													
110 - Horizon	DB	DD	EA	EB	EC	ED	JB	KA	KB				
111 - Challenger	MA	MB	MC	MD									
112 - Bicentennial South	TA	TB	TC	TD									
113 - Discovery	LC	LD	RA	RC	RD	SA	SB	SD					
114 - Desert Garden													
115 - Coyote Ridge													
116 - Desert Spirit	AD	GA	GB	GC	GD	HA	HC	HD					
117 - Sunset Vista	FA	FB	FC	FD	LA	LB							

Historical & Projected ADM





Next Steps: Study Session January 28, 2020

1. Site Analysis
2. Transportation Analysis
3. Staffing Model
4. Phased Approach Timeline to Possible School Closure and/or School Repurposing
5. Comprehensive staff and community communication plan